

RAIL EVO



FEATURES

The EVO injector rail combines the technical features of a high-end injector rail with outstanding resistance to the impurities in gas, so that use of a gas filter is not indispensable.

The gas coming from the filter, enters from the connection "A" and fills the common chamber of the injector group.

Appropriately dosed the gas exits from the injectors through the nozzles "B" and arrives, via a specific connection, to the intake manifold and therefore the engine.

The injectors are driven by the gas control unit and are connected to it through the "D" connectors.

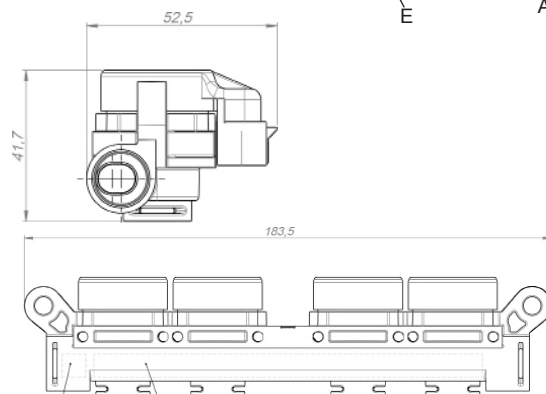
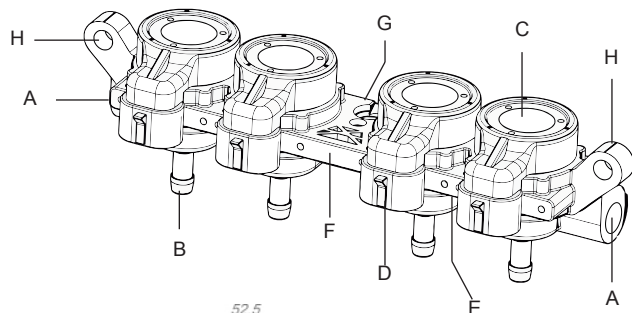
The injectors are of one size, the different flow rate is determined by the installed nozzles.

The growing number written on the metal nozzles and coloring of plastic nozzles indicate the vast scope of the injectors.

VERSIONS

SIZE	PLUG COLOR
1.6	RED
1.8	YELLOW
2.0	GREEN
2.2	BLACK
2.4	WHITE
2.6	GREY

- A. Gas inlet connector
- B. gas outlet nozzles
- C. Injectors
- D. Connectors injectors
- E. Injectors Size
- F. Injectors Case
- G. Approval
- H. Fixing points injectors group



MAINTENANCE

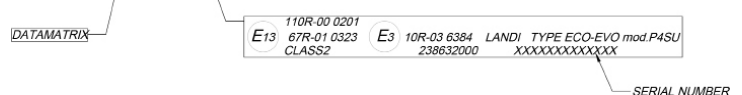
Maintenance at 60.000 Km

ENDURANCE

300 million cycles

HOMOLOGATIONS

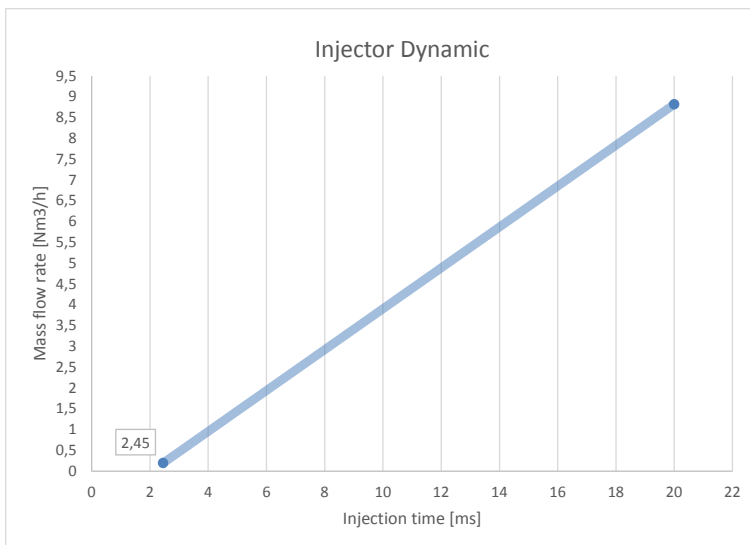
E13 67 R -010290
 E13 110 R -000123
 E3 10 R-046345



TECHNICAL SPECIFICATIONS

DIMENSION	1.6	1.8	2.0	2.2	2.4	2.6
FUEL TYPE	LPG , CNG					
TYPE OF INJECTOR	normally closed					
GAS INLET	side feed					
WORKING PRESSURE	0,5 ÷ 4,5 bar					
TEST PRESSURE	10 bar					
COIL RESISTANCE	1,96 ohm					
PEAK CURRENT	4,4 A					
MAINTENANCE CURRENT	2,0 A peak&hold					
VOLTAGE WORKING	4,5/13,5 V					
OPENING TIME	2,45 ms					
CLOSING TIME	1,9 ms					
OPERATING TEMPERATURE	-20° C / +120° C -40° C / +120° C (metal model)					

FLOW RATE



INJECTOR/NOZZLES SIZE		kW/cylinder			
		10 - 15	15 - 20	20 - 25	over 25
cc/cylinder	200 - 280	1.8	1.8	2	2.2
	290 - 370	2	2	2.2	2.4
	380 - 440	2	2.2	2.2	2.4
	450 - 500		2.2	2.4	2.6
	up to 510			2.6	2.6

ACCESSORIES

